

JoMASH
DRAG & DROP

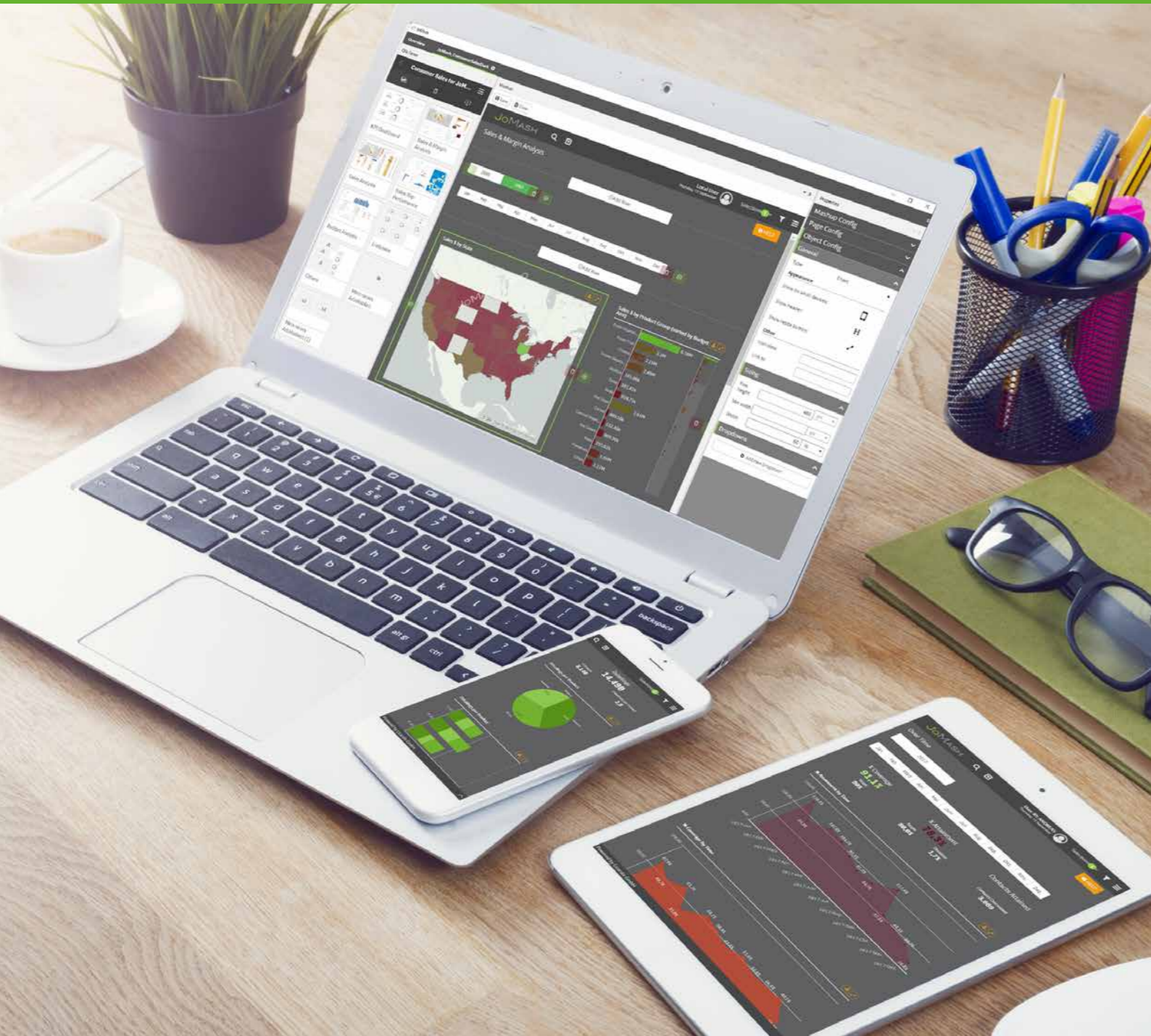
JoMASH
ELEMENTS



**DASHBOARDS, GUIDED ANALYTICS AND
CUSTOM APPLICATIONS FOR QLIK SENSE®**



JOMASH DRAG&DROP – DASHBOARDS AND GUIDED ANALYTICS



JoMash Drag&Drop is refining Qlik Sense®. Qlik Sense® Hub focuses on self-service BI applications and thus targets business analysts. JoMash Drag&Drop puts the focus on Guided Analytics – the ideal extension for customers who offer provide and guided analytics. JoMash and Qlik Sense® the ideal combination.

USER-FRIENDLY DESIGN

The user-friendly navigation, the customised corporate and responsive design, and the unique analysis functionalities regarding searching and filtering data enable the user to reach the required result with just a few clicks.

FROM QLIKVIEW® TO QLIK SENSE®

The focus is on dashboards and guided analytics so that previous QlikView® users can achieve an optimum switch to Qlik Sense®. Necessary features are thus available.

MULTI-APP SUPPORT

Objects from any number of Qlik Sense® applications can be easily integrated into a JoMash analysis via drag & drop. The actual creation takes minutes instead of hours and needs no programming skills.

- Integration of objects from any number of Qlik Sense® applications
- Multi-level navigation
- Filter panel with multiple tabs that can be adjusted from page to page and displayed as needed
- Linking of all objects to any pages
- Dropdown lists for fields and variables with images
- Search field across multiple applications with configurable field list
- Full screen mode for all objects including filtering
- Export of data to Excel, PDF and image files for each object
- Responsive design optimised for PC, tablet and smartphone
- Complex objects can be hidden on mobile phones
- Completely individual styling via CSS possible
- Integration of external web content

**PROGRAMMING SKILLS
ARE NOT NECESSARY!**

JOMASH ELEMENTS – CUSTOM-APPLICATIONS

JoMash Elements provides reusable components for the integration of Qlik Sense® objects into any web page. This makes it the ideal tool for all web developers and OEM partners who wish to integrate Qlik Sense® or create individual mashups. The time needed is reduced from many days to a few hours.

REUSABLE COMPONENTS

Qlik Sense® objects from multiple applications can be integrated into your project with just one line of HTML code without you having to implement the communication with the Qlik Sense® API yourself. What is more, numerous functionalities are available for your integrated objects, such as full screen or export to Excel, PDF or image. Besides the integration of Qlik Sense® objects, you can also use all the functions from JoMash in components.

ANY WEB FRAMEWORK POSSIBLE

JoMash Elements adapts to any development environment used. The development can take place in JavaScript, TypeScript or Dart. Any frameworks such as AngularJS or ReactJS are supported.

KNOWLEDGE OF QLIK SENSE® API NOT NECESSARY

Direct communication with the Qlik Sense® API is not required. Server names and app IDs are stored in the configuration. The components take care of session handling and performance management.

- Component list (extract):
- Qlik Sense® objects with full screen option
 - Export to Excel, PDF and image
 - Conditional display of objects
 - Evaluating formulas and variables
 - Multi-app search
 - Filter panel can be faded in and out
 - Multi-level navigation
 - Current selection box

STYLE
ALL COMPONENTS
INDIVIDUALLY
AND EASILY VIA CSS



THIS IS WHAT OUR PARTNERS AND CUSTOMERS THINK



” Lizardis has done more with JoMash Elements in two days than we did with our entire team in a month.“

Quote from a customer, pharmaceutical company

” Finally, we can create management dashboards which are really easy to use and accepted by Top Management.“

Quote from a customer, USA

” For a mashup that takes a month to develop, we can now do it with JoMash in a single hour.“

Quote from a Qlik® partner, Brazil

” One of our customers has dozens of worksheets in his Qlik® application. JoMash is a real blessing here with its navigation structure.“

Quote from DACH, a Qlik® partner

Your benefits when using JoMash Drag&Drop and JoMash Elements:

- Considerable reduction in project investment and costs many times over
- Significant reduction in follow-up costs due to maintenance and support
- New releases are made available for each Qlik Sense® release
- New user groups can be reached by individual applications
- More acceptance in the business due to better usability

**IF REQUIRED,
WE CAN ALSO DEVELOP
CUSTOM ELEMENTS
ESPECIALLY FOR YOUR
REQUIREMENTS!**

Lizardis GmbH, based in Lüneburg, Hanover and Leverkusen, is one of the leading mashup and extension partners. Well-known end customers of Qlik® and many Qlik® partners already rely on our experience and solutions. Many of our employees come directly from the manufacturer QlikTech® and thus have an excellent network and many years of project experience. Due to our agile development, you as a customer can get an insight at any time and can influence the development of the project. With the Lizardis component framework JoMash Elements, you can dramatically reduce the work required for mashup projects and avoid follow-up costs with release updates! This has already been confirmed to us many times over.

LIZARDIS
BUSINESS INTELLIGENCE

Lizardis GmbH · www.lizardis.de · info@lizardis.de
Phone +49 4131 5800030

The following technologies are used:

- Mashup
(build based on Dart)
 - AngularDart v5
 - SASS (CSS preprocessor)
 - HTML
 - Bootstrap
 - Compass SASS
 - Fontawesome
 - Simplelineicons
- Drag & Drop Editor
 - Template plus:
 - C# (WPF)

